

CHATHM COUNTY PURCHASING DEPARTMENT

ADDENDUM NO. 2 TO 10-12-3-6

FOR: OFFICE FUNITURE FOR NEW RECORDS FACILITY

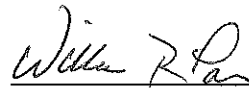
PLEASE SEE THE FOLLOWING FOR ADDITIONS, CLAIRIFICATIONS, AND/OR CHANGES:

1. **SEE ATTACHEMENTS:** 2nd REVISED Bid Fee Form with floor plans identifying the location of reception area, conference room, offices, and break room where furniture will be installed.

NOTE: BID DUE DATE AND TIME WILL BE EXTENDED TO 2:00 P.M. JULY 27, 2010

THE BIDDER IS RESPONSIBLE FOR MAKING THE NECESSARY CHANGES AND MUST ACKNOWLEDGE RECEIPT OF ADDENDUM.

July 12, 2010
DATE



WILLIAM R. PARSON, CPPO
PURCHASING AGENT
CHATHAM COUNTY GOVERNMENT

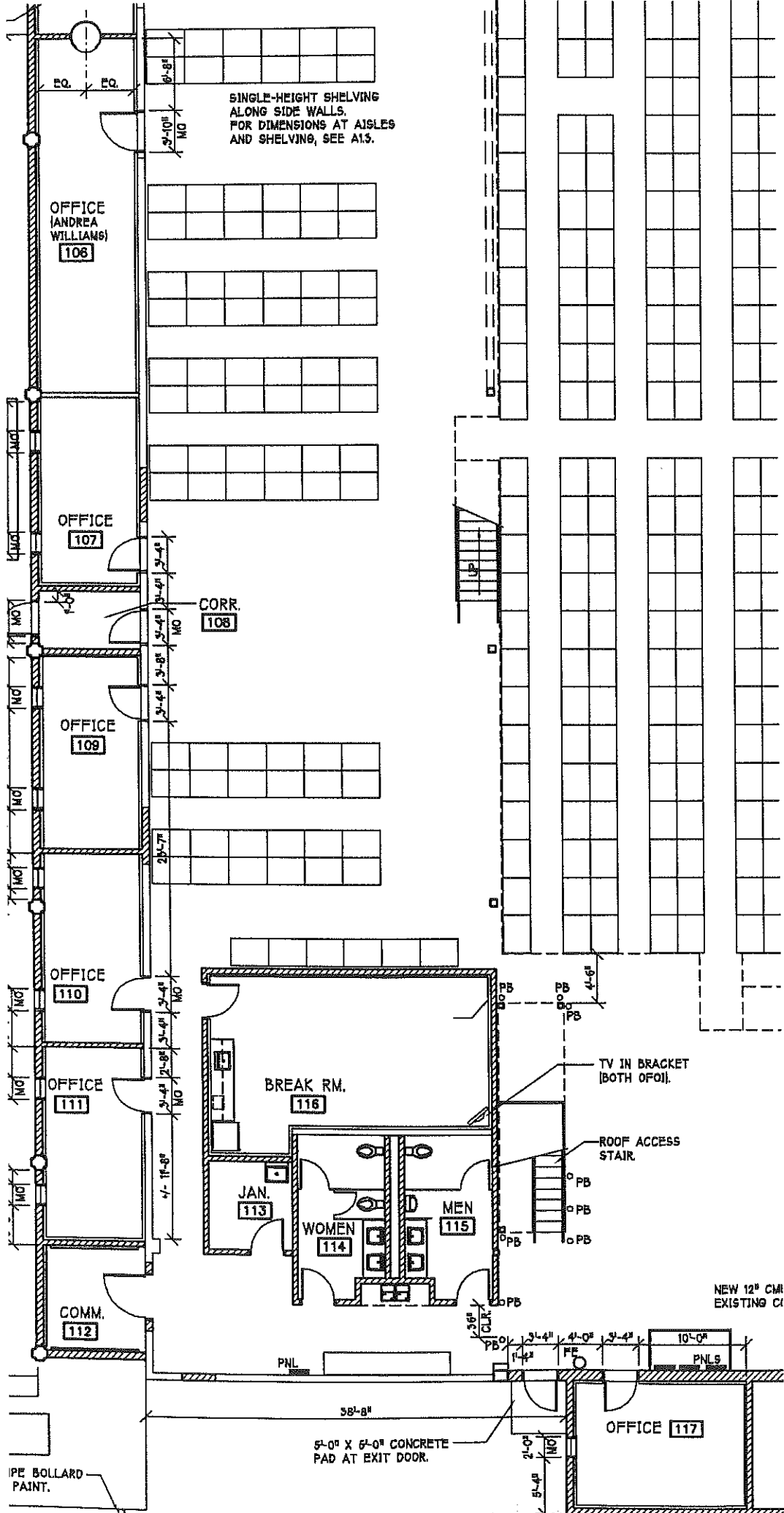
Chatham County, Georgia

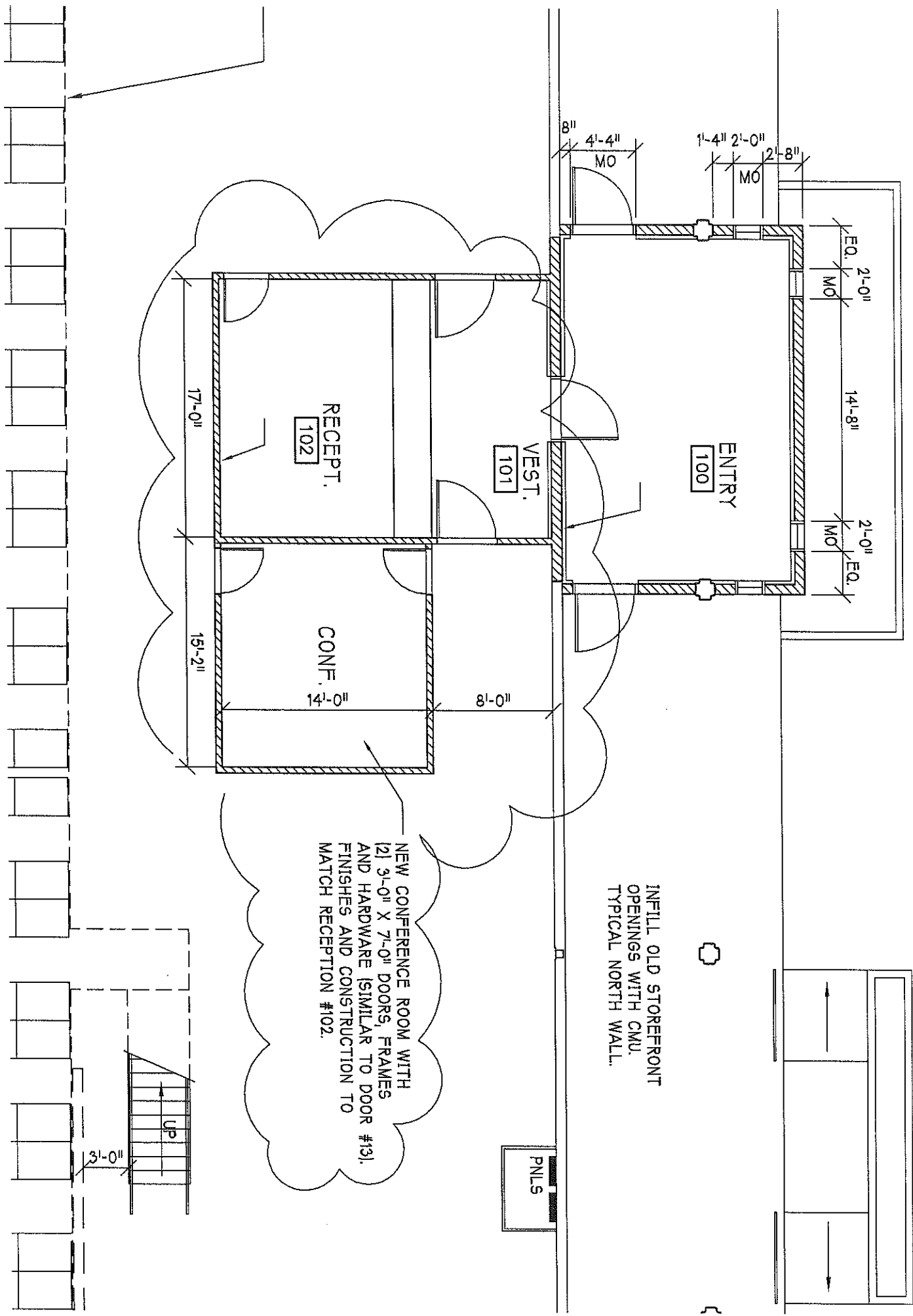
BID FEE FORM

Office Furniture for Chatham County New Records Facility

ROOM	ITEM DESCRIPTION	QUANTITY	PRICE	TOTAL
100/102	Chair. Live II, Stack full back w/ glides and arms Grade B	4		
	Desk. L shape 1" top w/ overhead and articulating keyboard w/ mouse, 1 F/F pedestal, 1 B/B/F pedestal, thermo fused laminated work surfaces	1		
	Chair. Task, Mid back multi function, memory foam seat and mesh back w/ adjust height & width arms	1		
Conf.	Table. conference 48x96, 1.5" top, high pressure laminate	1		
	Board. Presentation/Marker Cabinet laminate	1		
	Chair. Sitwell, Image Conference Grade 3 swivel tilt mid back, chrome loop arm and base	8		
106	Desk. L shape dual depth extended corner w/ overhead and articulating keyboard w/ mouse, 1 F/F pedestal, 1 B/B/F pedestal, 1" thermo fused laminate work surfaces	2		
	Chair. Sitwell, Memory Del Mar mid back multi function task, memory foam seat and mesh back w/ adjust height & width arms	2		
	Desk. Rectangular 24 x 72	1		
107	Desk. L shape dual depth extended corner w/ overhead and articulating keyboard w/ mouse, 1 F/F pedestal, 1 B/B/F pedestal, 1" thermo fused laminate work surfaces	2		
	Chair. Sitwell, Memory Del Mar mid back multi function task, memory foam seat and mesh back w/ adjust height & width arms	2		
109	Desk. L shape, dual depth corner bow front w/ overhead and articulating keyboard w/ mouse, 1 F/F pedestal, 1 B/B/F pedestal, 1" thermo fused laminate work surfaces	1		
	Chair. Sitwell, Memory Del Mar mid back multi function task, memory foam seat and mesh back w/ adjust height & width arms	1		
	Chair. Live II, Stack full back w/ glides and arms Grade B	2		
	Bookcase. Rectangular, 5 high	1		
110	Desk. L shape, dual depth corner bow front w/ overhead and articulating keyboard w/ mouse, 1 F/F pedestal, 1 B/B/F pedestal, 1" thermo fused laminate work surfaces	1		

	Chair. Sitwell, Memory Del Mar mid back multi function task, memory foam seat and mesh back w/ adjust height & width arms	1		
	Chair. Live II, Stack full back w/ glides and arms Grade B	2		
	Bookcase. Rectangular, 5 high	1		
111	Desk. U shape, extended dual depth corner bow front, articulating keyboard w/ mouse, overhead storage w/ paper management, 1 F/F pedestal, 1 B/B/F pedestal, 1.5" high pressure laminate work surfaces.	1		
	Chair. Sitwell, Memory Del Mar high back multi function task w/ headrest, memory foam seat and mesh back w/ adjust height & width arms.	1		
	Chair. Live II, Stack full back w/ glides and arms Grade B	2		
	Bookcase. Rectangular, 5 high	1		
117	Desk. U shape, extended dual depth corner bow front, articulating keyboard w/ mouse, overhead storage to have silver framed acrylic doors w/ paper management, 1 F/F pedestal, 1 B/B/F pedestal, 1.5" high pressure laminate work surfaces.	1		
	Chair. Sitwell, Memory Del Mar high back multi function task w/ headrest, memory foam seat and mesh back w/ adjust height & width arms.	1		
	Chair. Live II, Stack full back w/ glides and arms Grade B	2		
	Bookcase. Rectangular, 5 high	1		
	File. 2 Drawer, lateral 24x36	1		
Break 116	Table. 36" Round w/ disc base	2		
	Chair. Sassy stack plastic	8		
	DELIVERY AND SETUP			
	TOTAL COST PLEASE ROUND TO THE NEAREST DOLLAR.			





RECEPT.
102

VEST.
101

ENTRY
100

CONF.
14'-0"

NEW CONFERENCE ROOM WITH
(2) 3'-0" X 7'-0" DOORS, FRAMES
AND HARDWARE (SIMILAR TO DOOR #13).
FINISHES AND CONSTRUCTION TO
MATCH RECEPTION #102.

INFILL OLD STOREFRONT
OPENINGS WITH CMU.
TYPICAL NORTH WALL.

PNLS

3'-0"

UP

