

CHATHAM COUNTY PURCHASING DEPARTMENT

ADDENDUM NO. 1 TO Bid No. 11-10-7-7

FOR: Construction of Handicap Seating and Ramp at Memorial Stadium

PLEASE SEE THE FOLLOWING ADDITIONS, CLARIFICATIONS AND/OR CHANGES:

1. **QUESTION:** What is the size of the vertical pickets on detail S 7.1?
RESPONSE: *All vertical pickets are to be 1/2 inch schedule 40 pipe.*
2. **QUESTION:** Due to the size limitations, how must the contractor install fasteners?
RESPONSE: *In regards to drawing S6.0 detail S4. See manufacturers detail attached.*
3. **QUESTION:** Are the guard rails and hand rails to be painted, or are they to be galvanized like the structural steel?
RESPONSE: *Paint the guard rails and hand rails to match existing structure. Paint to be specified by owner.*
4. **QUESTION:** Is there a footing detail in the ground for columns HSS where there is no existing concrete ramp?
RESPONSE: *See attached SK1 to supersede detail S3 on drawing S-5.0. Also attached is SK2 to supersede S5 on drawing S-5.0. All HSS columns are to bear on top of concrete pad.*
5. **QUESTION:** McNichols, the specified aluminum plank manufacturer wants to verify the exact type of plank specified for the seating area. The number HD70RS is not a specific product number.
RESPONSE: *Additional descriptive information for the aluminum planks is as follows. HD RS Extruded Plank Series 2 inch height with 45 degree angle slots and 15 percent open area.*

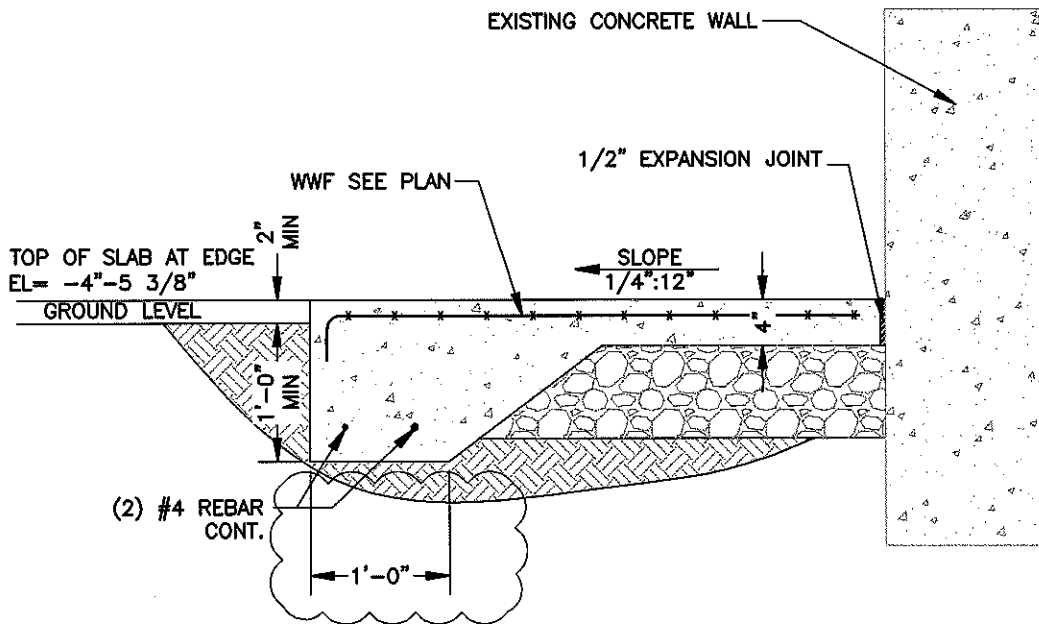
THE BID OPENING SHALL REMAIN 2PM 1 JUNE 2011.

THE BIDDER IS RESPONSIBLE FOR MAKING THE NECESSARY CHANGES AND MUST ACKNOWLEDGE RECEIPT OF ADDENDUM.

5-27-11
DATE



WILLIAM PARSON
PURCHASING AGENT
CHATHAM COUNTY



DETAIL



SECTION CUT

AT CONCRETE PAD UNDER HANDICAP PLATFORM

scale: 3/4" = 1'-0"

FIELD VERIFY ALL DIMENSIONS
PRIOR TO FABRICATION



CAD FILE: H:\CLIENTS\CH\2009\01

| ISSUE No. | DESCRIPTION | DATE |
|-----------|------------------------|----------|
| 0 | ISSUE FOR CONSTRUCTION | 05/27/11 |
| | | |
| | | |

NOTE:
THIS IS A REPRODUCTION OF A RWP DRAWING AND IS SUPPLIED FOR USE ONLY FOR WORK AUTHORIZED BY RWP.
THIS REPRODUCTION SHALL NOT BE DISCLOSED, USED OR REPRODUCED EITHER WHOLLY OR IN PART EXCEPT IN CONNECTION WITH SUCH USE, OR WITH THE PRIOR WRITTEN CONSENT OF RWP.
THIS DRAWING MUST NOT BE USED FOR CONSTRUCTION OR FABRICATION UNTIL SIGNED AS CHECKED AND ISSUED FOR CONSTRUCTION BY RWP.

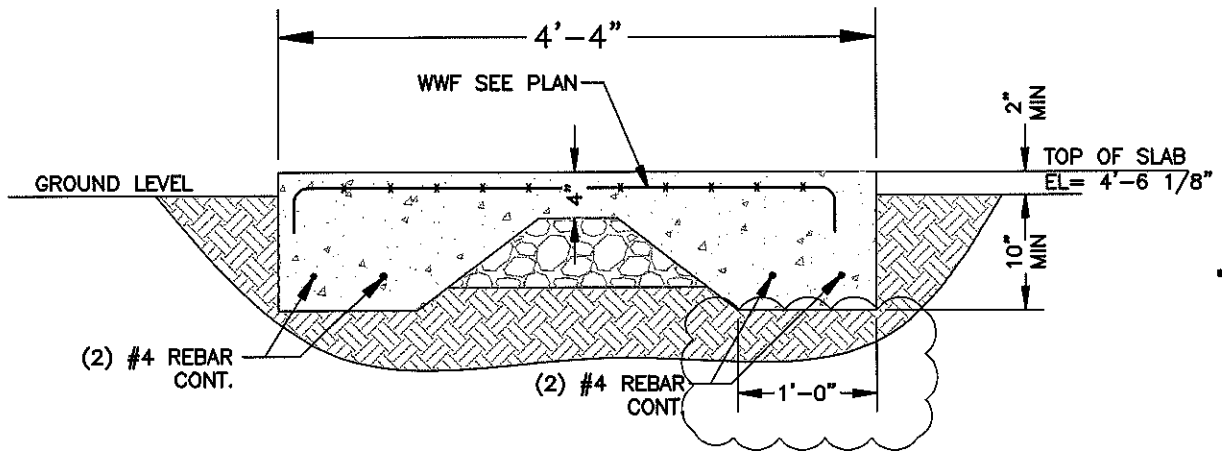
**CHATHAM COUNTY
MEM. STADIUM HANDICAP SEATING
STRUCTURAL DETAIL**

| | | |
|-------|------------------------|----------------------|
| ISSUE | LAST REVISED: 05/27/11 | LAST REVISED BY: SBB |
| 0 | DRAWN BY: SBB | RWP PROJ. MGR: FAM |

INITIAL DWG. DATE:
05/27/11
SCALE:
AS SHOWN

RWP *RWP Engineering, Inc.*
Consulting Engineers
Industrial / Commercial / Utilities
31 West Congress St., Suite 305 Savannah, GA 31401
ph. (912) 231-9212 fx. (912) 231-9220

DWG. NO. **9-CH01-SK2**



DETAIL 

SECTION CUT
 AT CONCRETE PAD BELOW ALUMINUM RAMP
 scale: 3/4" = 1'-0"

FIELD VERIFY ALL DIMENSIONS
 PRIOR TO FABRICATION



CAD FILE: H:\CLIENTS\CH\2009\01

| ISSUE No. | DESCRIPTION | DATE |
|-----------|------------------------|----------|
| 0 | ISSUE FOR CONSTRUCTION | 05/27/11 |
| | | |
| | | |

NOTE:
 THIS IS A REPRODUCTION OF A RWP DRAWING AND IS SUPPLIED FOR USE ONLY FOR WORK AUTHORIZED BY RWP.
 THIS REPRODUCTION SHALL NOT BE DISCLOSED, USED OR REPRODUCED EITHER WHOLLY OR IN PART EXCEPT IN CONNECTION WITH SUCH USE, OR WITH THE PRIOR WRITTEN CONSENT OF RWP.
 THIS DRAWING MUST NOT BE USED FOR CONSTRUCTION OR FABRICATION UNTIL SIGNED AS CHECKED AND ISSUED FOR CONSTRUCTION BY RWP.

CHATHAM COUNTY
MEM. STADIUM HANDICAP SEATING
STRUCTURAL DETAIL

RWP *RWP Engineering, Inc.*
 Consulting Engineers
 Industrial / Commercial / Utilities
 31 West Congress St. Suite 305 Savannah, GA 31401
 ph. (912) 231-9212 fx. (912) 231-9220

| | | |
|-------|------------------------|----------------------|
| ISSUE | LAST REVISED: 05/27/11 | LAST REVISED BY: SBB |
| 0 | DRAWN BY: SBB | RWP PROJ. MGR: FAM |

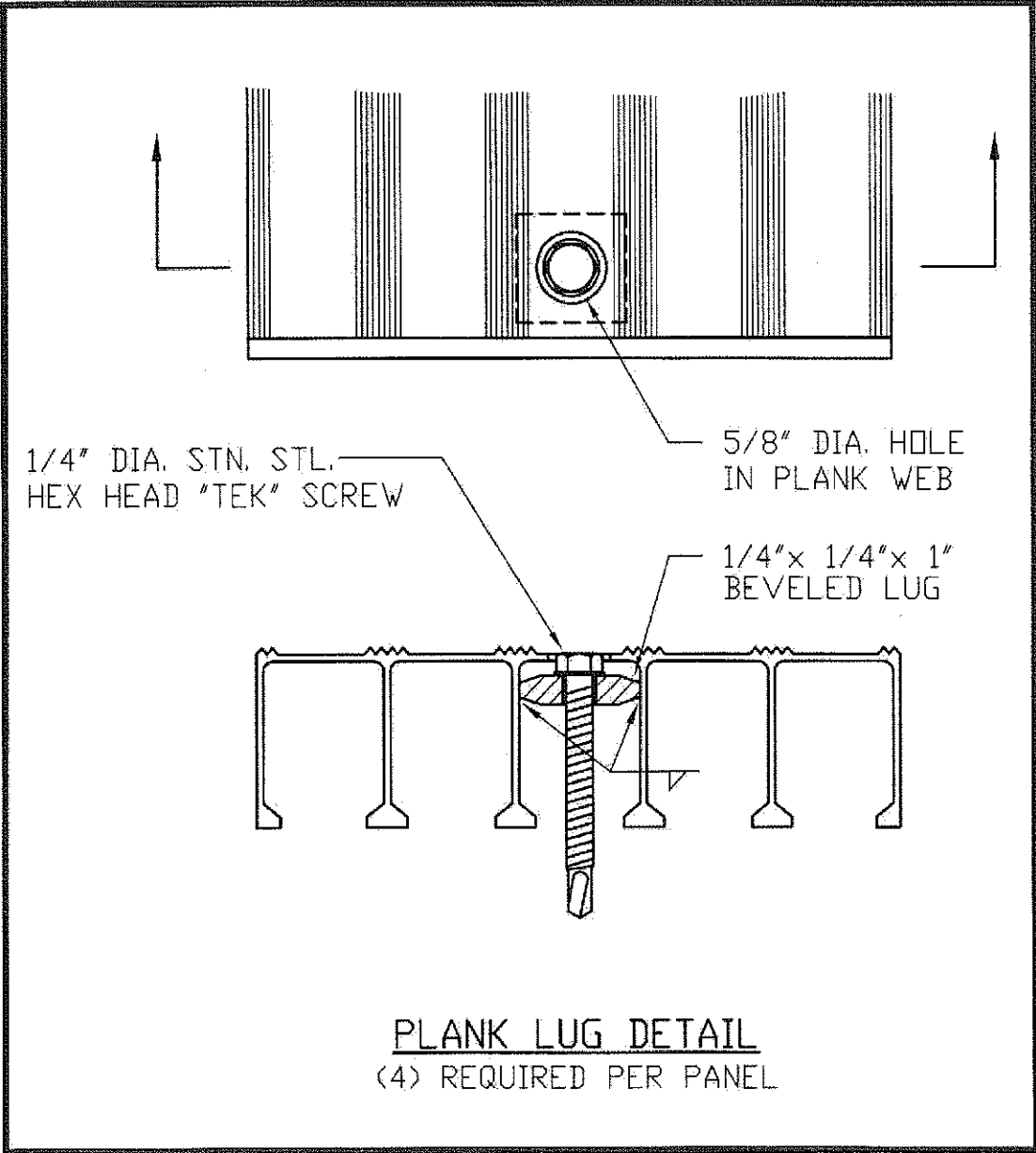
INITIAL DWG. DATE:
 05/27/11
 SCALE:
 AS SHOWN

DWG. NO. **9-CH01-SK1**

ADA PUNCHED FASTENER DETAIL

Aluminum Plank

This fastening device is used for punched patterns, primarily ADA.



OHIO GRATINGS INC.

5299 Southway SW • Canton, OH 44706 • Toll Free: 800-321-9800 • Fax 330-477-7872 • www.ohiogratings.com