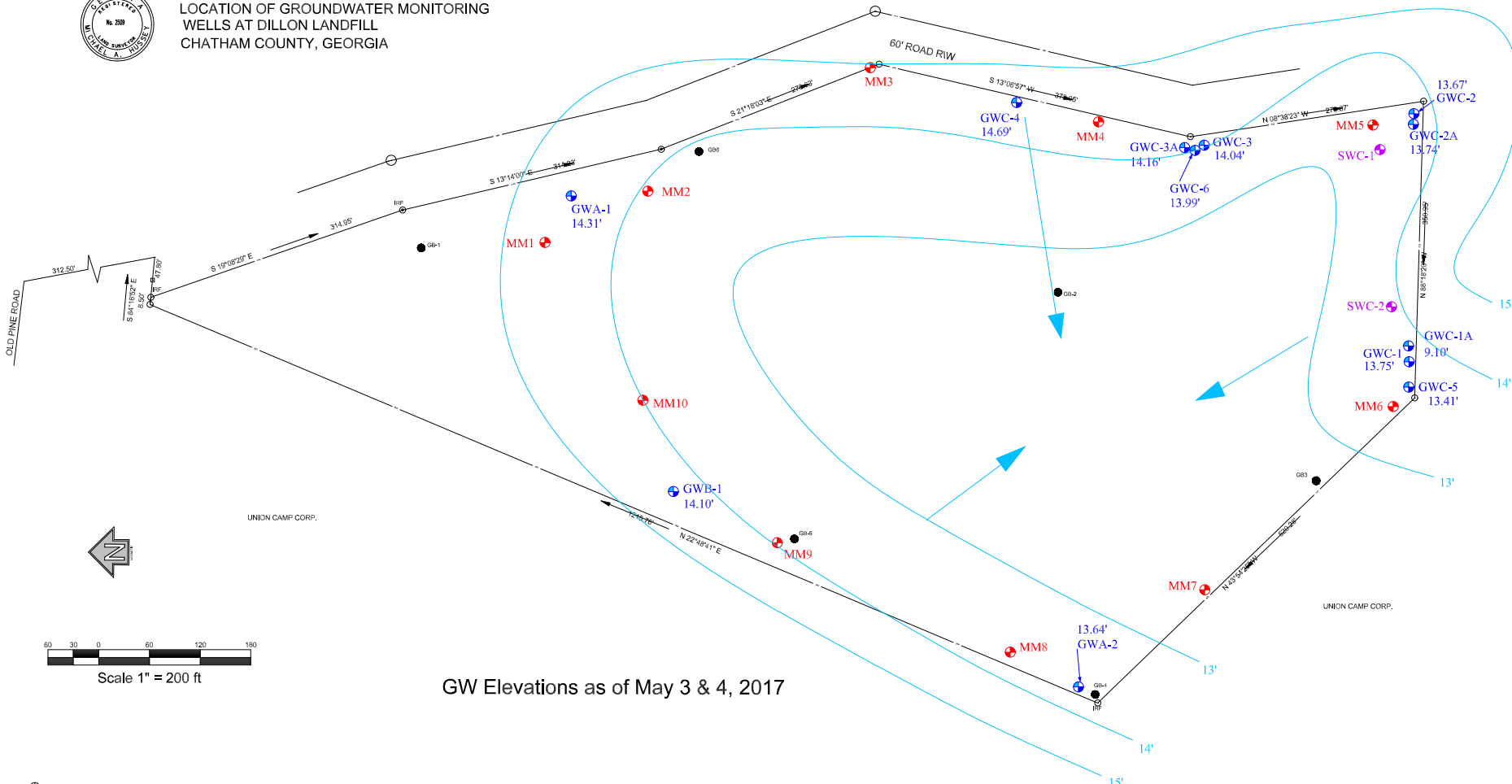
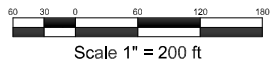




LOCATION OF GROUNDWATER MONITORING WELLS AT DILLON LANDFILL
CHATHAM COUNTY, GEORGIA



GW Elevations as of May 3 & 4, 2017



- ⊕ FIELD LOCATED GROUND WATER MONITORING WELLS
 - △ APPROVED LOCATIONS - GROUND WATER MONITORING WELLS
 - METHANE MONITORING LOCATIONS
 - BORING LOCATION
 - SURFACE WATER POINT
- APPROXIMATE FLOW DIRECTIONS

A DVANCED
ENVIRONMENTAL
M ANAGEMENT, INC.
3482 Keith Bridge Road #137 Cumming, Georgia 30041
PHONE: 770-242-8882; FAX: 678-448-1796; E-MAIL: general@aesmanet.net

ENVIRONMENTAL MAP

DILLON LANDFILL
SAVANNAH, GEORGIA
PERMIT NO. 025-040D(L)

PROJECT NO. 0773
PROJECT MANAGER: WMB
FILE NAME/PATH:
DRAWN/EDITED BY: DDR
DRAWING SCALE: 1"=200'
DRAWING/REVISION DATE: 5/26/17
REVISION(S): UPDATED ELEVATIONS