

CHATHAM COUNTY PURCHASING DEPARTMENT

ADDENDUM NO. 1 TO BID 14-0030-7

FOR: Furniture For Human Resources Department

PLEASE SEE THE FOLLOWING ADDITIONS, CLARIFICATIONS AND/OR CHANGES:

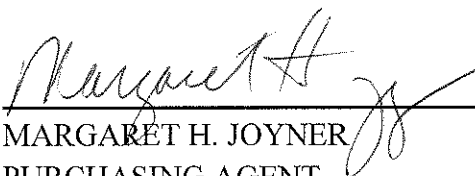
1. Please use the attached REVISED BID SHEET with bid. Revised bid sheet reflects changes in quantities and an additional Item #47.
2. See attached revised furniture layout.

**BID DUE DATE HAS BEEN EXTENDED TO
2:00PM APRIL 8, 2014.**

*******THE BIDDER IS RESPONSIBLE FOR MAKING THE NECESSARY CHANGES
AND MUST ACKNOWLEDGE RECEIPT OF ADDENDUM.*******

04/02/14

DATE


MARGARET H. JOYNER
PURCHASING AGENT
CHATHAM COUNTY

REVISED BID SHEET

CHATHAM COUNTY, GEORGIA

BID

BID NO. 14-0030-7

FURNITURE FOR HUMAN RESOURCES DEPARTMENT

Item #	Manf.	Part #	Description	Qty	U/M	Manf. Model #	Unit Price	Total Price
1	ASC	78140-T2	Inertia, Mesh/Knit Back, Task, Highback, Synchro Tilt, Task 2 Arm	4	EA			
2	ASC	14054-WA	Ayr, Midback, Stacker, With Ayr Arms	10	EA			
3	ASC	14054-NA	Ayr, Midback, No Arms	19	EA			
4	ASC	84012-MF	You, Midback, Deluxe Synchro Tilt, Multi-Functional Arm	1	EA			
5	ASC	92040-CA	Zip, Fully Upholstered, Conference, Midback, Synchro Tilt, Conference Arms	10	EA			
6	FOF	4-3622LFF2	36x29.94 Two (2) drawer lateral file pulse	10	EA			
7	FOF	4-3643BC2	36 x 42.5 Square Edge Bookcase Organizer Pulse	10	EA			
8	FOF	4-7222FCR	72x22 Full Pedestal Kneespace Credenza Pulse	10	EA			
9	FOF	4-7236FDP	72x36 Double Full Pedestal Desk Pulse	10	EA			
10	FOF	4-7243HDD4-2	72x15x42.5 Highback Organizer-4Doors, Pulse	10	EA			

Revised Bid Sheet

Item #	Manf.	Part #	Description	Qty	U/M	Manf. Model #	Unit Price	Total Price
11	FOF	4-2248FRPR	22x48 Full Right Pedestal Return Pulse	2	EA			
12	FOF	4-6630FLPD	66x30 Full Left Pedestal Desk Pulse	1	EA			
13	FOF	4-7843HD4-2	78x15x42.5 Highback Organizer-4 Doors. Pulse	1	EA			
14	FOF	4-7236EBTR/CB4	72x36 Right Bullet Table with End Pulse	1	EA			
15	FOF	APSC7224R	Applause 72x24 Rectangular Top for Static Center Column Base	2	EA			
16	FOF	TSC22	T 22" Static Center Column Base for 24 & 48" ConnectEdge Top	2	EA			
17	FOF	AKS42R	Applause 42" Round Top for X Base	2	EA			
18	FOF	ASX38	Deuce 37.75" Static X Base for 42" Top	2	EA			
19	FOF	ANNC20	Applause Deuce 19.625" Flip- Nest Ctr Column Base for 24&48. ConnectEdge Top	1	EA			
20	FOF	ANNC2084	Applause Deuce 19.625" Flip- Nest Ctr Column Base for 84x24 Top	3	EA			
21	FOF	APNCC6024R	Applause 60x24 Rectangular Top for Flip-and-Nest Center Column Base	1	EA			

Revised Bid Sheet

Item #	Manf.	Part #	Description	Qty	U/M	Manf. Model #	Unit Price	Total Price
22	FOF	APNCG8424R	Applause 84x24 Rectangular Top for Flip-and-Nest Center Column Base	3	EA			
23	FOF	4-2242BR	22x42 Bridge Pulse	1	EA			
24	FOF	4-3656LF4	36x57.69 Four Drawer Lateral File Pulse	1	EA			
25	FOF	4-3672BC	36x14x72.5 Square Edge Bookcase Pulse	1	EA			
26	FOF	4-6622FCRL	66x22 Full Left Pedestal Credenza Pulse	1	EA			
27	FOF	4-6630FRPD	66x30 Full Right Pedestal Desk Pulse	1	EA			
28	FOF	4-6643HD4-2	66x15x42.5 Highback Organizer-4 Doors, Pulse	1	EA			
29	GLB	26-301	Vertical Files-2600 Series-3 Drawer w/Lock included	3	EA			
30	GRP	VC13	Affinity Task Chair, Mesh Back w/Arms	15	EA			
31	OFS	30837	22Wx23.38DX32H Guest, Rlyme	39	EA			
32	OFS	5-3058LF4	30x22 4-Drawer Lateral File Cabinet, Impulse G2	2	EA			
33	OFS	5-3672BC2	36x72.5 Bookcase, Impulse G2	3	EA			
34	OFS	5-7222FCR2	72x22 Full Double Pedestal Kneespace Credenza, Impulse G2	3	EA			

Revised Bid Sheet

Item #	Manf.	Part #	Description	Qty	U/M	Manf. Model #	Unit Price	Total Price
35	OFS	5-7236FDP2	72 x 36 Full Double Pedestal Desk, Impulse G2	3	EA			
36	OFS	99-48RT	48" Dia Round Top -- Contour edge	4	EA			
37	OFS	CB-M	Cylinder Base	4	EA			
38	OFS	5-7243HD4-2	72x15x42.5 4-Door Highback Organizer, Impulse G2	2	EA			
39	OFS	40437	242.5Wx25.25Dx32.75H Guest with UPH Arm Insert, Mystique	6	EA			
40	OFS	75-3722LFF2	37x22 Lateral File, 2 Drawer, Praxis	2	EA			
41	OFS	75-44BC2	37x44 Bookcase, Praxis	2	EA			
42	OFS	75-60BCB2	36x60 Bookcase, Praxis	1	EA			
43	OFS	75-7236DP2	72x36 Double Pedestal Desk, Praxis	1	EA			
44	OFS	CB-11	Ellipse Base w/End Caps	3	EA			
45	OFS	CT1-12048-2G	120x48 Straight Grain Boat-Shaped Top-1.19: Thick-Lumberbanded	1	EA			
46	OFS	FT1087	70.375x22.625 1-PC Tackboard, Impulse G2	1	EA			
47	OFS	75-7222CR2	72 x 22 Kneespace Credenza, Praxis	1	EA			
			TOTAL				BID	\$

Revised Bid Sheet

ALL FIRMS REQUESTING TO DO BUSINESS WITH CHATHAM COUNTY MUST REGISTER ON-LINE AT
[HTTP://PURCHASING.CHATHAMCOUNTY.ORG](http://PURCHASING.CHATHAMCOUNTY.ORG)

NAME/TITLE

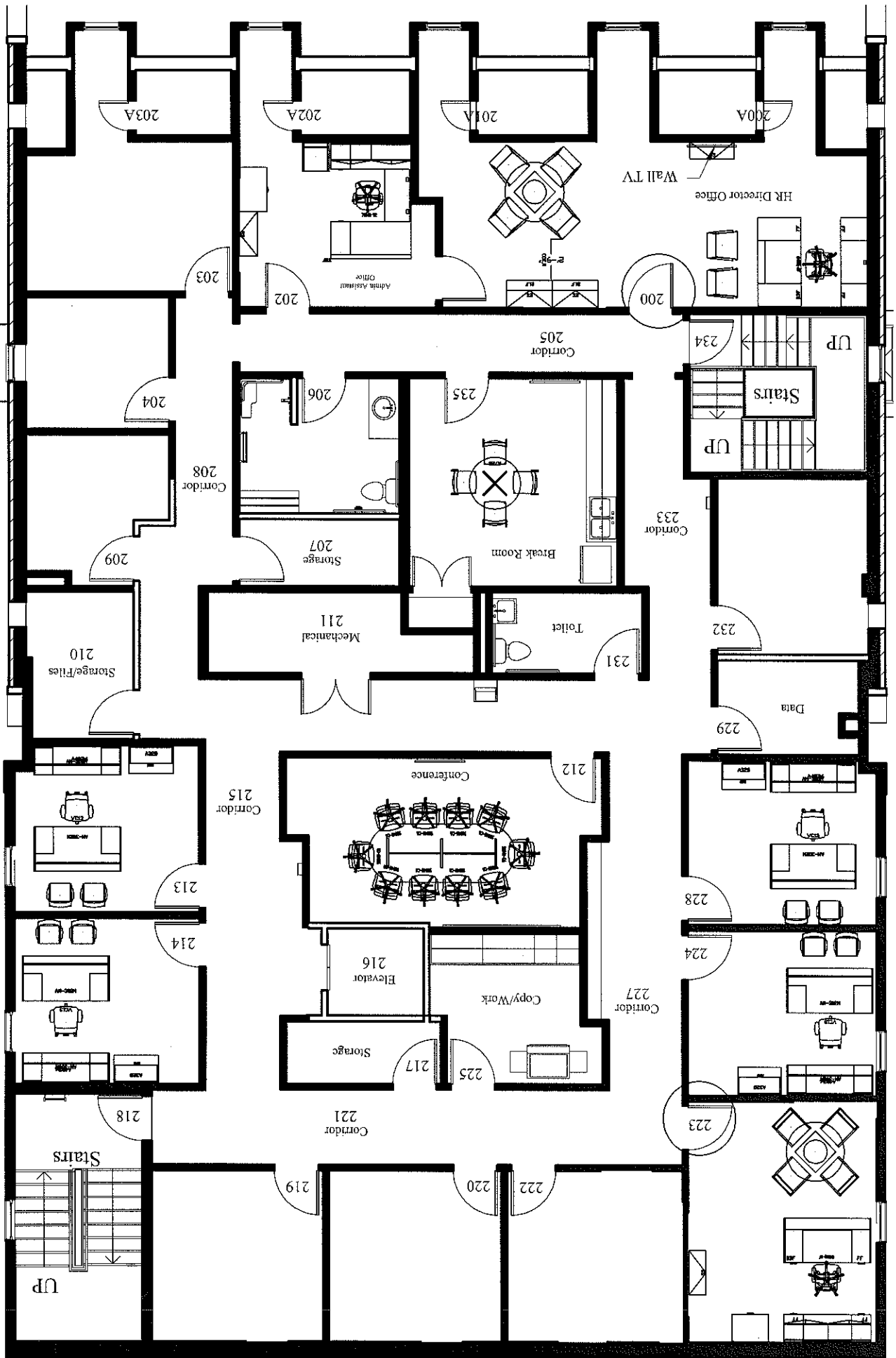
COMPANY NAME

ADDRESS

CITY/STATE/ZIP

PHONE/FAX NUMBER

Revised Furniture Layout - 2nd Floor



Revised Furniture Layout - 1st Floor

