

1 PARTIAL FIRST FLOOR CEILING FRAMING PLAN - AREA C
 SCALE: 1/8" = 1'-0"

FIRST FLOOR CEILING FRAMING PLAN NOTES

1. PRECAST CONCRETE SUPPLIER SHALL DESIGN AND DETAIL ALL PRECAST CONCRETE SUPPLIER'S DESIGN AND DETAILING SHALL BE RESPONSIBLE FOR PROVIDING DESIGN CALCULATIONS AND APPROVED DRAWINGS FOR PRECAST CONCRETE MEMBERS. DESIGN AND DETAILING SHALL BE RESPONSIBLE FOR PROVIDING DESIGN CALCULATIONS AND APPROVED DRAWINGS FOR PRECAST CONCRETE MEMBERS. DESIGN AND DETAILING SHALL BE RESPONSIBLE FOR PROVIDING DESIGN CALCULATIONS AND APPROVED DRAWINGS FOR PRECAST CONCRETE MEMBERS. DESIGN AND DETAILING SHALL BE RESPONSIBLE FOR PROVIDING DESIGN CALCULATIONS AND APPROVED DRAWINGS FOR PRECAST CONCRETE MEMBERS. DESIGN AND DETAILING SHALL BE RESPONSIBLE FOR PROVIDING DESIGN CALCULATIONS AND APPROVED DRAWINGS FOR PRECAST CONCRETE MEMBERS. DESIGN AND DETAILING SHALL BE RESPONSIBLE FOR PROVIDING DESIGN CALCULATIONS AND APPROVED DRAWINGS FOR PRECAST CONCRETE MEMBERS. DESIGN AND DETAILING SHALL BE RESPONSIBLE FOR PROVIDING DESIGN CALCULATIONS AND APPROVED DRAWINGS FOR PRECAST CONCRETE MEMBERS.
2. PRECAST CONCRETE SUPPLIER SHALL BE SOLELY RESPONSIBLE FOR FINAL DESIGN AND DETAILING OF PRECAST CONCRETE MEMBERS AND CONNECTIONS. SUPPLIER IS RESPONSIBLE FOR COORDINATION WITH ALL OTHER DISCIPLINES REGISTERED IN THE STATE OF GEORGIA.
3. CEILING CONSTRUCTION: 8" PRECAST HOLLOW CONE PLANK (HCB).
4. THE ELEVATIONS SHOWN ON PLAN REFER TO THE FIRST FLOOR (LOWEST FLOOR ELEVATION OF 0'-0" (REFERENCE)).
5. TOP OF PLANK = 8'-8" TYPICAL UNDO (X-X) ON PLAN.
6. REFER TO ARCHITECTURAL AND MECHANICAL DRAWINGS FOR NUMBER, SIZE, AND LOCATIONS OF ALL OPENINGS SHOWN AND NOT SHOWN. THE PRECAST DESIGNER SHALL ACCOUNT FOR ALL MECHANICAL/ELECTRICAL OPENINGS. REFER TO MECHANICAL/ELECTRICAL DRAWINGS FOR ALL MECHANICAL/ELECTRICAL OPENINGS AND COORDINATION WITH ARCHITECTURAL ENGINEER AND CONSTRUCTION.
7. REFER TO ARCHITECTURAL DRAWINGS AND FOUNDATION PLANS FOR DIMENSIONS AND SPACING.
8. REFER TO TYPICAL DETAILS, STRUCTURAL NOTES, AND PROJECT SPECIFICATIONS FOR ADDITIONAL INFORMATION.
9. REFER TO SHEET S102 FOR ALL SCHEDULES.
10. REFER TO SHEET S114 FOR ALL SCHEDULES.
11. REFER TO SHEET S114 FOR REQUIRED WALL REINFORCING.

Corporate Headquarters
 615 West Highland Avenue
 Ebensburg, PA 15931

phone (814) 472-7700
 fax (814) 472-7712
 email architecture@kimballcorp.com
 web site www.kimballcorp.com

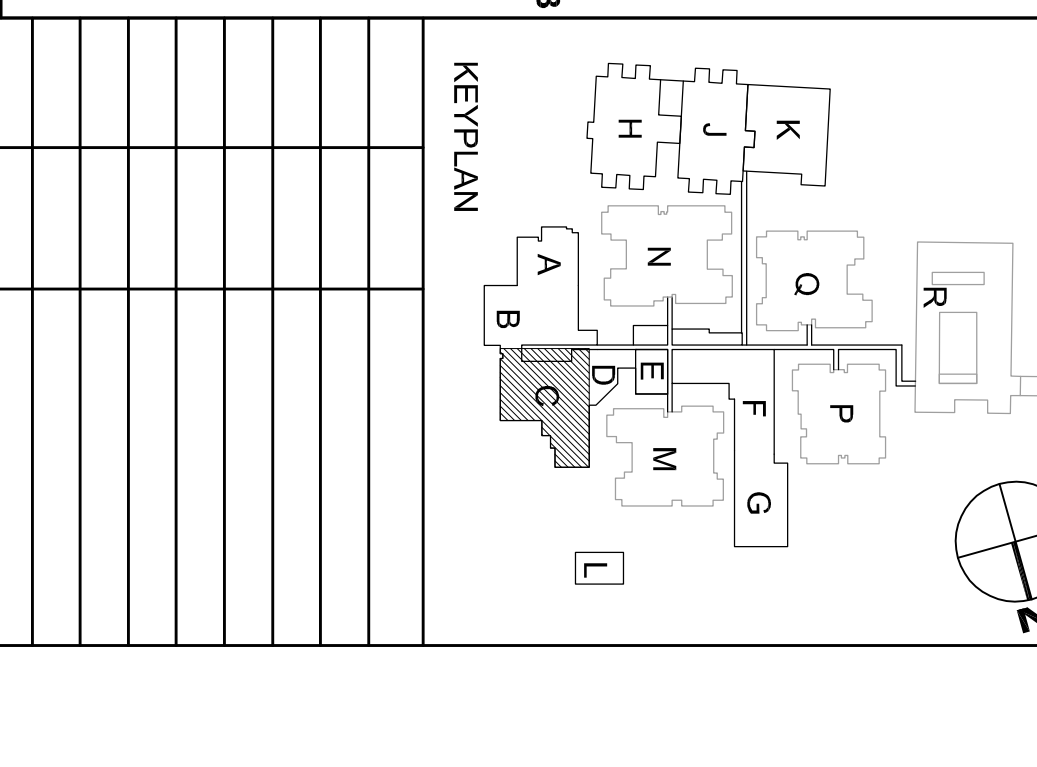
PROJECT NAME:

CHATHAM COUNTY DETENTION CENTER EXPANSION

OWNER:
 CHATHAM COUNTY BOARD OF COMMISSIONERS
 124 BULL STREET
 SAVANNAH, GA 31401

CONSULTANT

PROFESSIONAL



| MARK | DATE | DESCRIPTION |
|---|------------------|-------------|
| ISSUE: | 05/14/2010 | |
| PROJECT NO.: | 08-1200-0503 | |
| CAD DWG FILE: | 080503_S115C.dwg | |
| DRAWN BY: | BC | |
| CHECKED BY: | BEB | |
| © L. Robert Kimball & Associates, Inc. | | |
| SHEET TITLE | | |
| PARTIAL FIRST FLOOR CEILING FRAMING PLAN - AREA C | | |
| S115C | | |