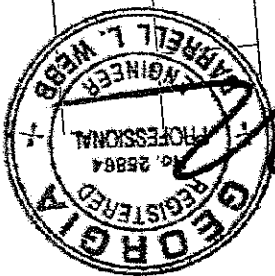
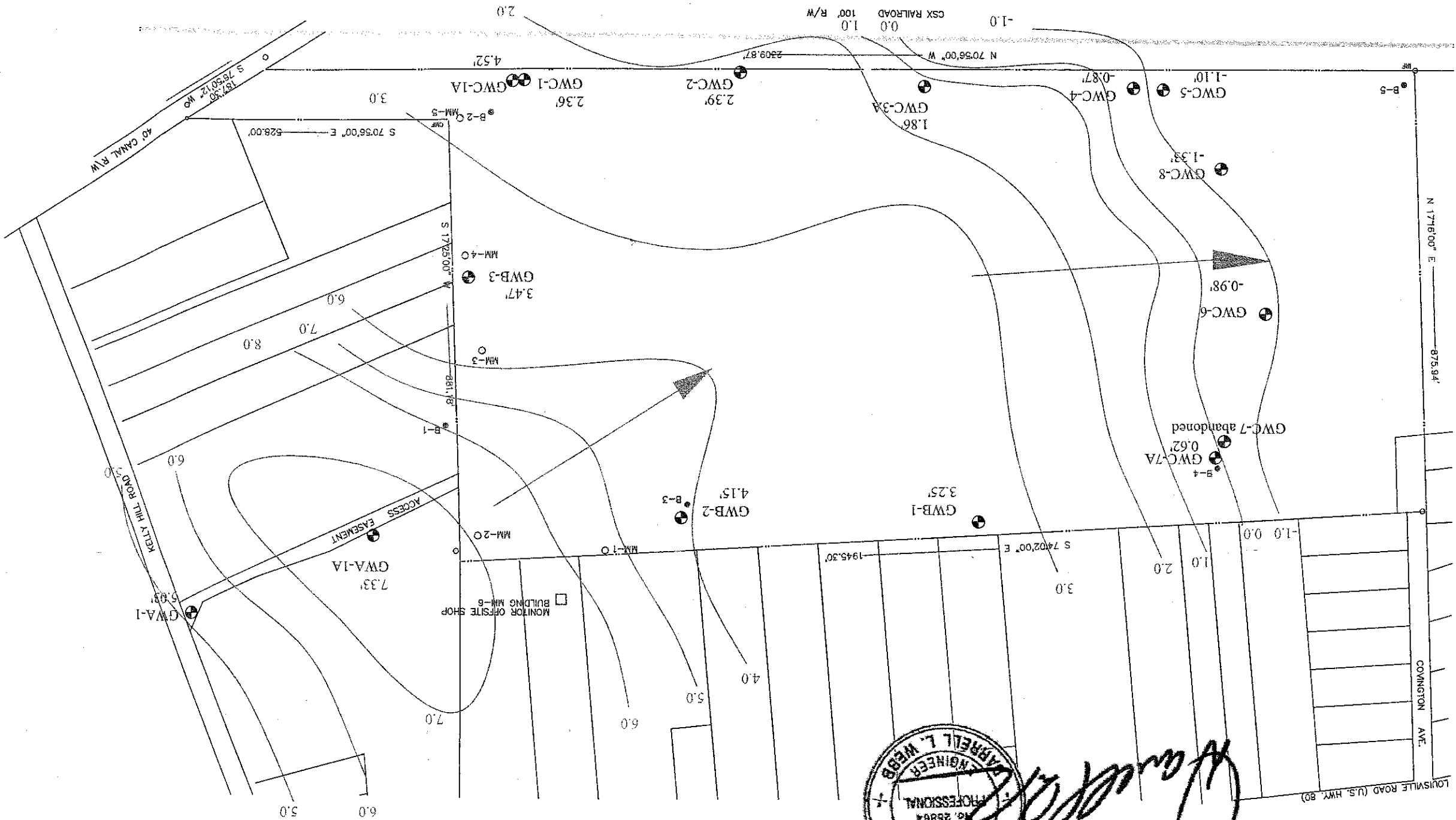
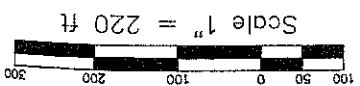


- ⊕ FIELD LOCATED GROUNDWATER MONITORING WELLS
- △ APPROVED LOCATIONS - GROUNDWATER MONITORING WELLS
- BORING LOCATIONS
- BORING LOCATIONS
- ⊙ SURFACE WATER POINTS

GW Elevations as of November 8, 2011



*Garrett L. Webb*

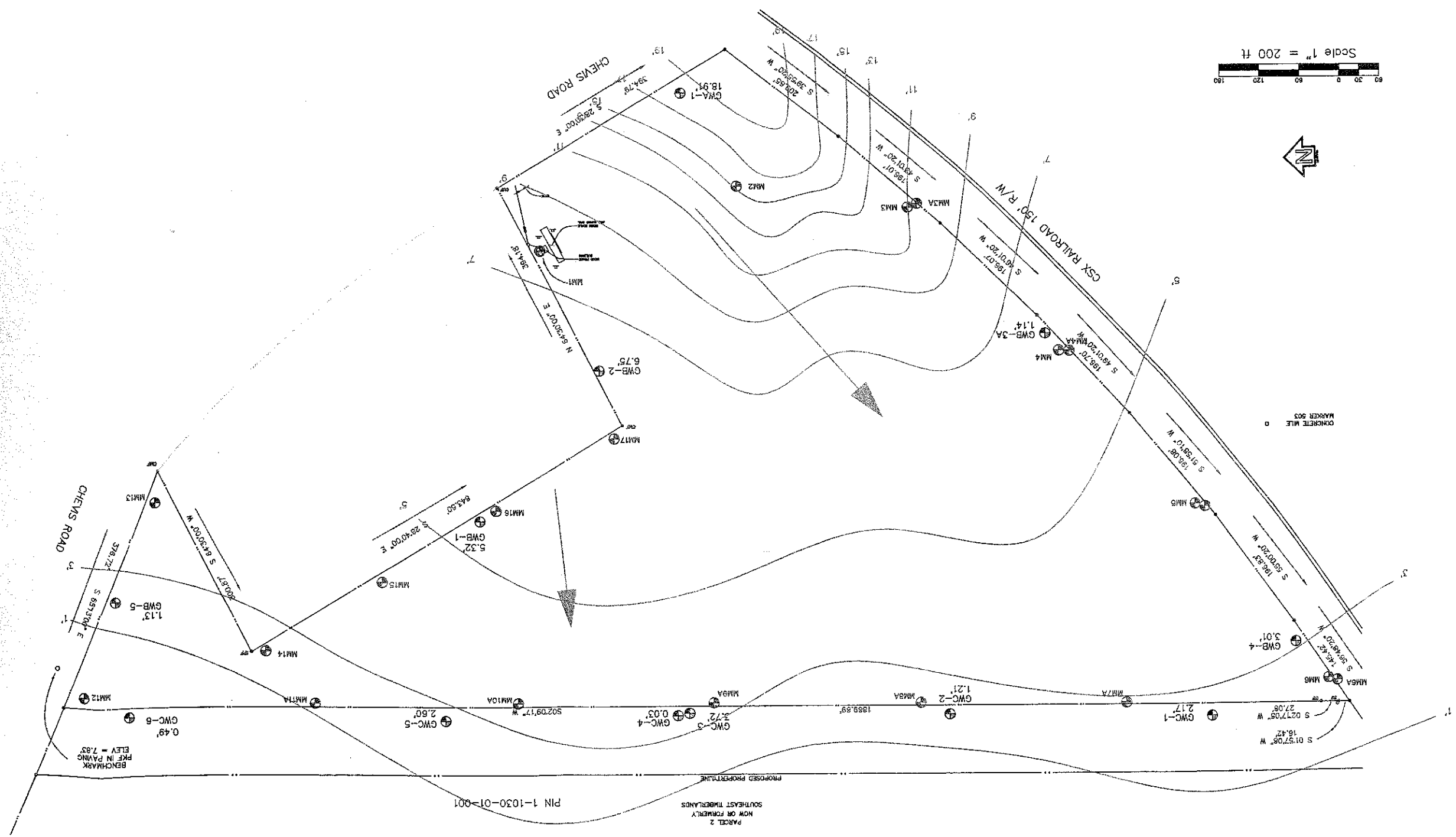
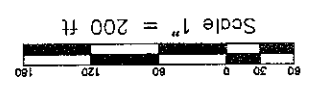
PROJECT NO. 0773  
 PROJECT MANAGER: VMB  
 FILE NAME/PATH:  
 DRAWN/EDITED BY: DDR  
 DRAWING SCALE:  
 DRAWING/REVISION DATE: 12/2/11  
 REVISION(S) UPDATED ELEVATIONS

**ENVIRONMENTAL MAP**  
**SHARON PARK LANDFILL**  
 SAVANNAH, GEORGIA  
 PERMIT NO. 025-057D(L)

**ADVANCED ENVIRONMENTAL MANAGEMENT, INC.**  
 2722 SIMPSON CIRCLE, NORCROSS, GEORGIA 30071  
 PHONE: 770-242-8885 FAX: 770-242-8888 E-MAIL: [environmental@amc.com](mailto:environmental@amc.com)

Potentiometric Elevation measured November 8, 2011  
 GWB-3A and GWC-4 excluded from potentiometric mapping

- LEGEND**
- GROUND WATER MONITORING WELLS
  - ⊕ APPROVED LOCATIONS - GROUND WATER MONITORING WELLS
  - ⊗ METHANE MONITORING LOCATIONS
  - BORING LOCATIONS
  - POTENTIOMETRIC ELEVATIONS
  - APPROXIMATE FLOW DIRECTIONS



*Handwritten signature*

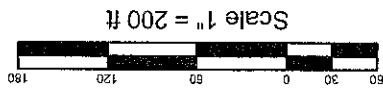
**REGISTERED PROFESSIONAL ENGINEER**  
**GEORGIA**  
 No. 25864  
**FARRELL L. WEBB**

PROJECT NO. 0773  
 PROJECT MANAGER: WMB  
 FILE NAME/PATH:  
 DRAWN/EDITED BY: DBR  
 DRAWING SCALE:  
 DRAWING/REVISION DATE: 12/1/11  
 REVISIONS/UPDATED ELEVATIONS

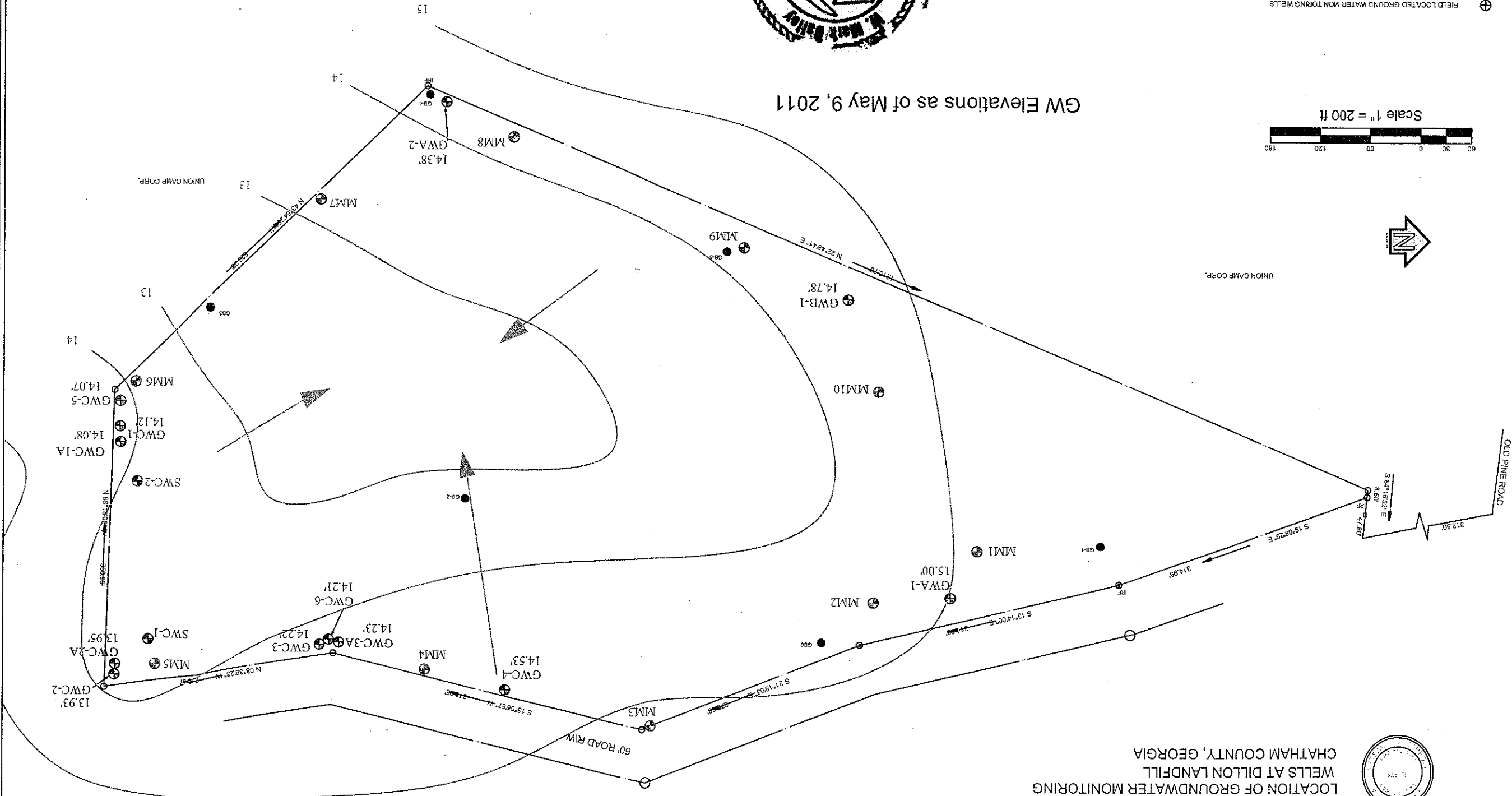
**ENVIRONMENTAL MAP**  
**CHATTAHAM COUNTY**  
**CHEVENS ROAD LANDFILL**  
**SAVANNAH, GEORGIA**

**ADVANCED ENVIRONMENTAL MANAGEMENT, INC.**  
 2722 SIMPSON CIRCLE, NORCROSS, GEORGIA 30071  
 PHONE: 770-948-8888; FAX: 770-948-8888; E-MAIL: [envman@envman.com](mailto:envman@envman.com)

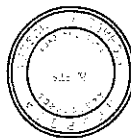
- ⊕ FIELD LOCATED GROUND WATER MONITORING WELLS
- △ APPROVED LOCATIONS - GROUND WATER MONITORING WELLS
- METHANE MONITORING LOCATIONS
- BORING LOCATION
- ⊙ SURFACE WATER POINT
- APPROXIMATE FLOW DIRECTIONS



GW Elevations as of May 9, 2011



LOCATION OF GROUNDWATER MONITORING WELLS AT DILLON LANDFILL CHATHAM COUNTY, GEORGIA



**ENVIRONMENTAL MAP**

PROJECT NO. 0773  
 PROJECT MANAGER: WMB  
 FILE NAME/PATH:  
 DRAWN/EDITED BY: DDR  
 DRAWING SCALE: 1"=200'  
 DRAWING/REVISION DATE: 11/23/10  
 REVISION(S) UPDATED ELEVATIONS

DILLON LANDFILL  
 SAVANNAH, GEORGIA  
 PERMIT NO. 025-040D(T)



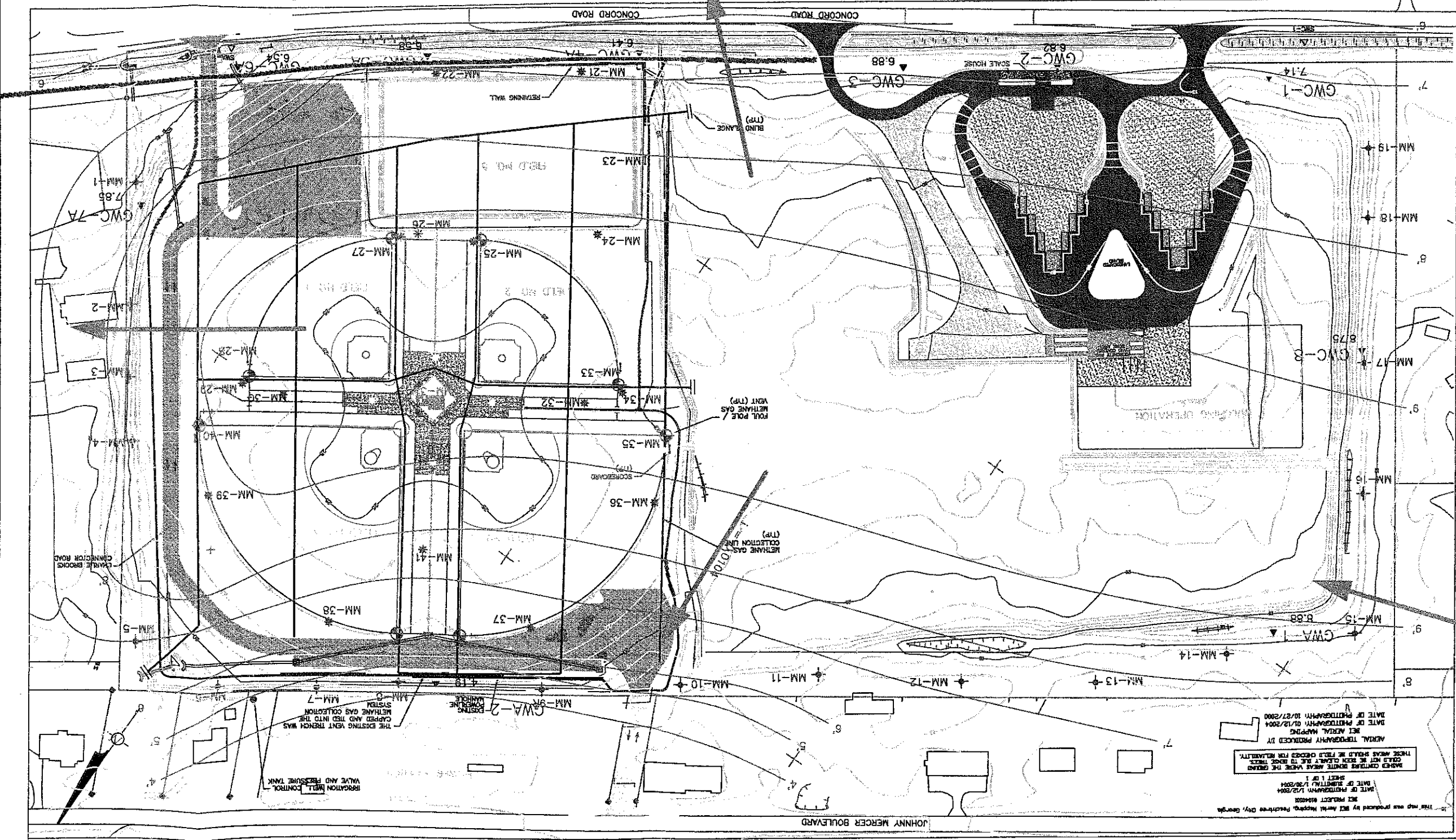
ADVANCED ENVIRONMENTAL MANAGEMENT, INC.  
 2722 SIMPSON CIRCLE, NORCROSS, GEORGIA 30071  
 PHONE: 770-245-0202 FAX: 770-245-5388 E-MAIL: [geosolutions@emgmt.com](mailto:geosolutions@emgmt.com)

**LEGEND**

- APPROXIMATE FLOW DIRECTION
- EXISTING GROUNDWATER WELL
- SURFACE WATER LOCATION
- EXISTING PROPERTY LINE
- BUILDING/STRUCTURE
- EXISTING METHANE MONITORING PROBE
- EXISTING METHANE MONITORING POINT (LIGHT POLE)
- EXISTING METHANE MONITORING POINT (SCOREBOARD)
- EXISTING METHANE GAS COLLECTION LINE
- TREELINE
- PAVED ROAD
- UNPAVED ROAD

GWC-7A 
  
 SWA-1

WELL	NORTHING	EASTING	TOP OF WELL SURVEY PIN ELEVATION	GROUNDWATER MONITORING WELLS
GWC-1	735.987.09	1,026.480.88	14.24	
GWC-2	735.984.63	1,026.482.24	13.18	
GWC-3	736.109.83	1,026.828.88	13.28	
GWC-4A	736.598.87	1,027.248.09	14.48	
GWC-4B	736.481.23	1,027.488.23	18.01	
GWC-5A	736.648.57	1,027.710.84	18.47	
GWC-5B	736.882.70	1,027.712.17	18.72	
GWC-6	736.882.13	1,026.181.88	11.83	
GWC-7A	736.485.22	1,026.041.84	13.47	
GWC-7B	737.205.18	1,026.979.88	20.81	



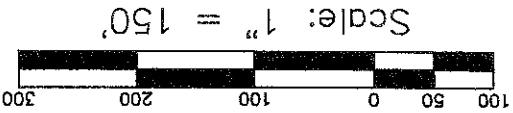
This map was produced by B&B Aerial Mapping, Peachtree City, Georgia  
 DATE OF PHOTOGRAPHY: 1/2/2004  
 SHEET 1 OF 1  
 DATE OF PHOTOGRAPHY: 12/2/2004  
 MAILED CONTAINS SOURCE AERIAL WHICH THE GROUND  
 THESE AREAS SHOULD BE FIELD CHECKED FOR RELIABILITY.  
 AERIAL PHOTOGRAPHY PRODUCED BY  
 DATE OF PHOTOGRAPHY: 01/12/2004  
 DATE OF PHOTOGRAPHY: 10/27/2000

**ENVIRONMENTAL MAP**  
**CHATTAHAM COUNTY**  
**WILMINGTON ISLAND LANDFILL**  
**SAVANNAH, GEORGIA**  
**PERMIT NO. 025-054D(L)**

**ADVANCED ENVIRONMENTAL MANAGEMENT, INC.**  
 2722 SIMPSON CIRCLE, NORCROSS, GEORGIA 30071  
 PHONE: 770-242-0288 FAX: 770-242-0286 E-MAIL: [envman@envman.net](mailto:envman@envman.net)

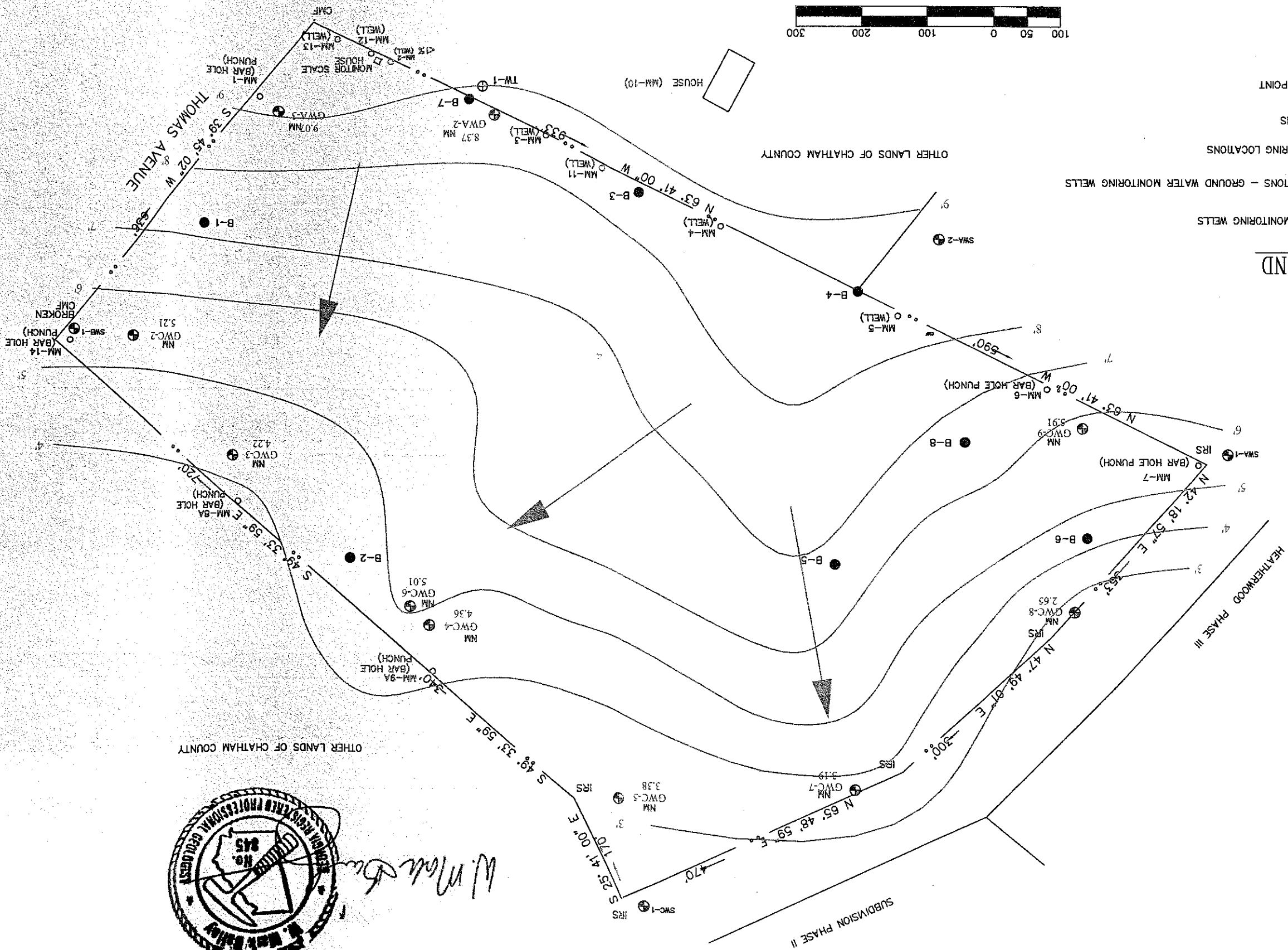
PROJECT NO. J0773  
 PROJECT MANAGER: WMB  
 FILE NAME/PATH:  
 DRAWN/EDITED BY: WMB  
 DRAWING SCALE:  
 DAWING/REVISION DATE: 11/30/11  
 REVISIONS/UPDATED ELEVATIONS

APPROXIMATE FLOW DIRECTIONS



- ⊕ SURFACE WATER POINT
- BORING LOCATIONS
- METHANE MONITORING LOCATIONS
- ⊕ APPROVED LOCATIONS - GROUND WATER MONITORING WELLS
- ⊕ GROUND WATER MONITORING WELLS

LEGEND



*W. Mark De...*  
 PROFESSIONAL GEOLOGIST  
 No. 945

PROJECT NO. J0773  
 PROJECT MANAGER, VMB  
 FILE NAME/PATH:  
 DRAWN/EDITED BY VMB  
 DRAWING SCALE:  
 DRAWING/REVISION DATE 6/12/11  
 REVISION(S): GV POTENTIOMETRIC MAP

**ENVIRONMENTAL MAP**  
**CHATHAM COUNTY**  
**THOMAS AVENUE**  
**SAVANNAH, GEORGIA**  
**PERMIT NO. 025-056D(1)**

**ADVANCED**  
**ENVIRONMENTAL**  
**MANAGEMENT, INC.**  
 2722 SIMPSON CIRCLE, NORCROSS, GEORGIA 30071  
 PHONE: 770-242-8888 FAX: 770-242-8888 E-MAIL: [envman@advancedenv.com](mailto:envman@advancedenv.com)