

Corporate Headquarters
615 West Highland Avenue
Ebensburg, PA 15931

phone (814) 472-7700
fax (814) 472-7712
email architecture@kimballcorp.com
web site www.kimballcorp.com

PROJECT NAME:

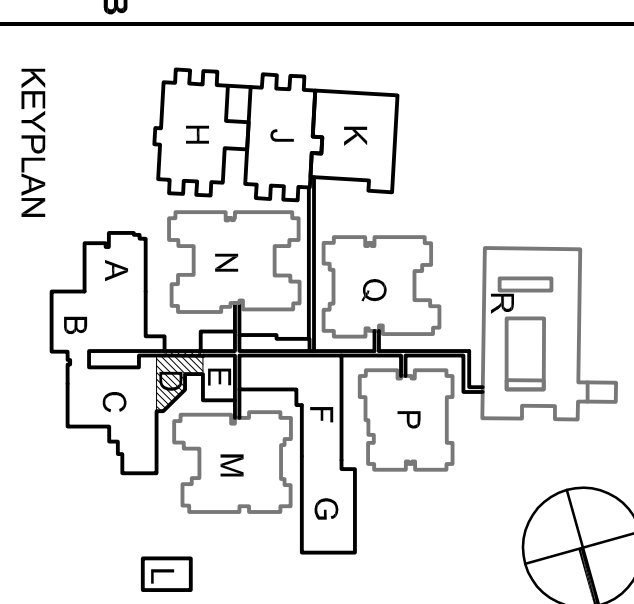
CHATHAM COUNTY DETENTION CENTER EXPANSION

OWNER:
CHATHAM COUNTY
BOARD OF COMMISSIONERS
124 BULL STREET
SAVANNAH GA 31401

SKING 270 Piedmont Street, N.E.
Suite 1660 Atlanta, GA 30365
404.524.2900
404.524.2999
INDEPENDENT PLANNERS & MANAGERS
www.skimg.com



PROFESSIONAL



MARK	DATE	DESCRIPTION
ISSUE: 05 / 14 / 10		
PROJECT NO.: 08-1200-0503		
CAD DWG FILE: 080503_A111D.dwg		
DRAWN BY: RM		
CHECKED BY: KV		
© L. Robert Kimball & Associates, Inc.		

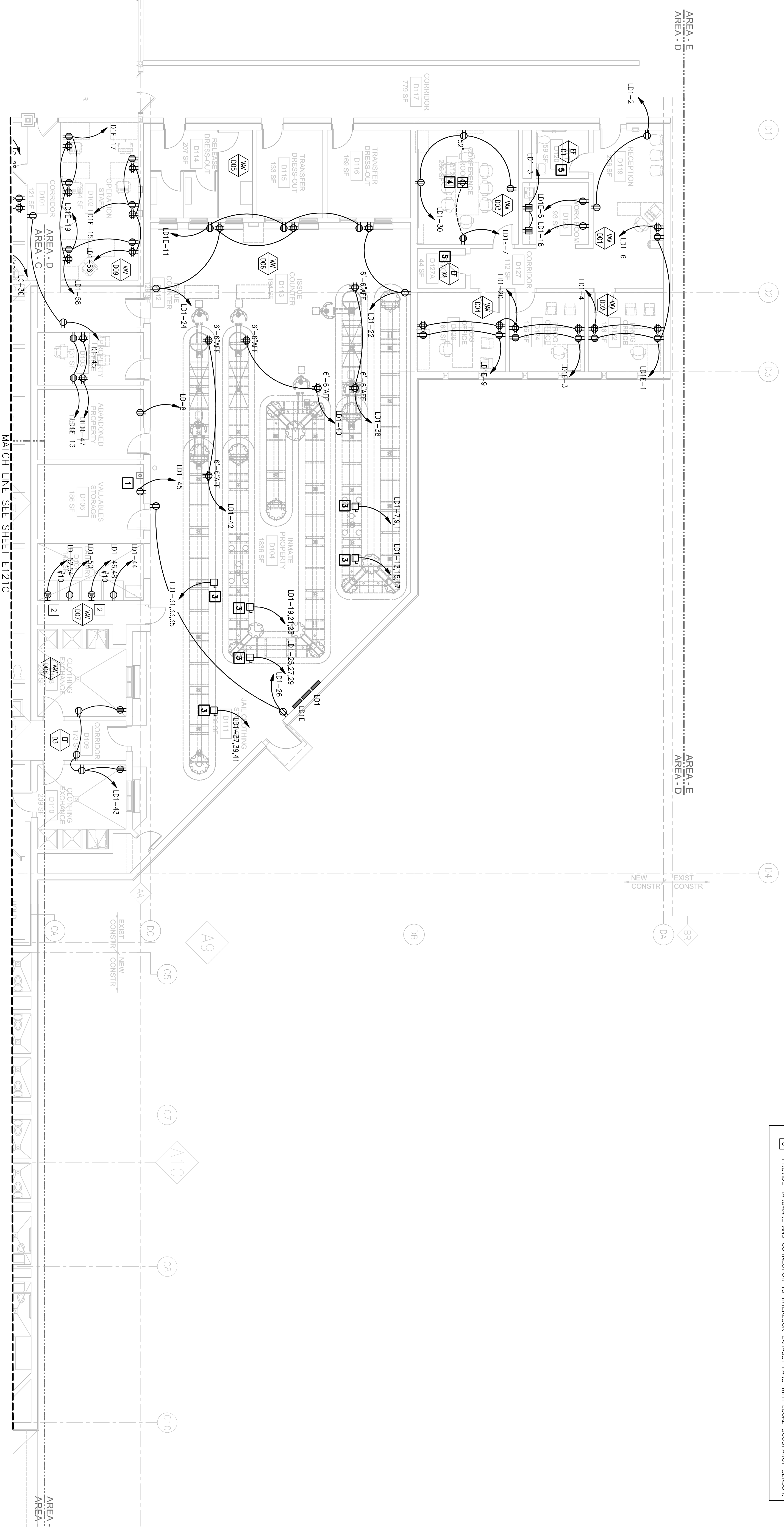
SHEET TITLE

PARTIAL
FIRST FLOOR PLAN
AREA 'D' -
ELECTRICAL - POWER

E121D

KEYED NOTES (FOR THIS SHEET ONLY)

- 1 PROVIDE DEDICATED CIRCUIT FOR PLUMBING TUBES, COORDINATE LOCATION WITH INSTALLER.
- 2 PROVIDE RECEPTACLE U6-30.
- 3 PROVIDE A HEAVY DUTY NEWM 1/20/75/1 DISCONNECT SWITCH. FUSE PER MANUFACTURER'S RECOMMENDATIONS.
- 4 PROVIDE POWER TO NEW FLOOR BOX. PROVIDE RIGID ELBOW WITH A 6" RIGID NIPPLE TO PENETRATE SUBSEQUENT EXACT LOCATION WITH THE FINISHED FURNITURE LAYOUT FROM TO ROOM-N, FLOOR BOX BY TELECOMMUNICATION CONTRACTOR.
- 5 PROVIDE HARDWARE AND CONNECTION TO INTERLOCK EXHAUST FANS WITH LOCAL OCCUPANCY SENSOR.



1 PARTIAL FIRST FLOOR PLAN - AREA 'D' - ELECTRICAL - POWER
SCALE: 1/8" = 1'-0"